

# Polyton

TONER

## High Quality Chemically Produced Color Toners For Laser Printer & Photocopier

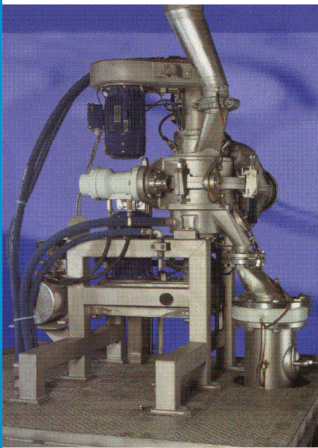
Polyton Color Imaging Inc. develops, formulates & exports OEM and compatible Black, Color and Eco-friendly Soy Based Toners for laser printers and photocopiers using world's latest toner producing technology called Chemically Produced Toner (CPT).

We understand the world wide demand of color toner which is increasing day and night. In order to serve a big demand from our customers spread worldwide. We have established state-of-the-art, well equipped high tech fully automatic computerized manufacturing plant.

Our well experienced research scientist are expert in technical & chemical processing know-how. The Research and Development center of Polyton Color Imaging Inc. located at Morbi (India).

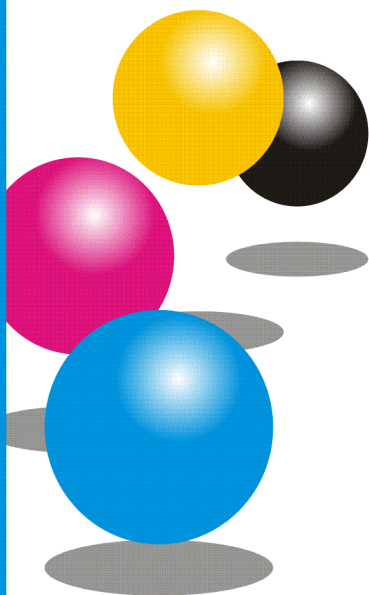
Working in harmony with our customers, we produce optimum solutions for the non-impact printing industries. Our many customers includes significant and world's most famous brand name in Original Equipment Manufacturer (OEM) who trust us to develop and manufacture toners for their needs.

Besides, dry electrostatic toner products, our group companies are committed to supply Ceramic Tiles, Frits, Pigments, Printing Mediums (P.E.G.), Aluminium DCC/DPC/Enamelled/Fibre Glass covered wires & bare conductor, welding machines etc.





# Polyton Polymerized Toner

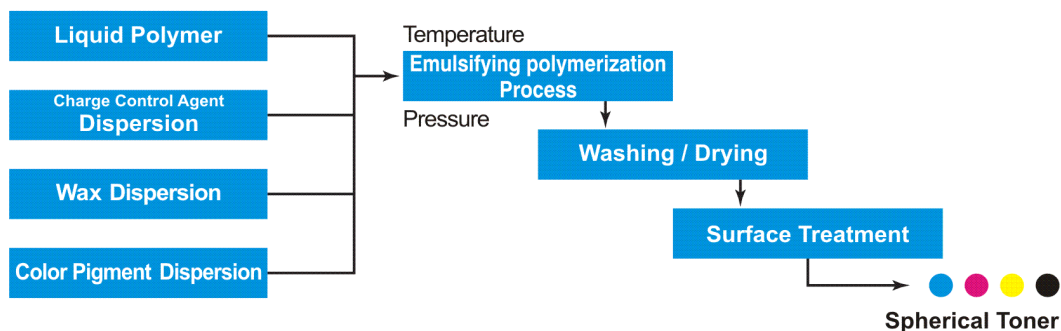


Chemical (or Polymerized) toners / Chemically Produced Toner (CPT) offer exciting possibilities to the laser printing and digital copying industry and are especially suited to new color applications.

Our range of Polyton polymerized toners are manufactured using an emulsifying polymerization process which produces round shape toner particles of a defined size avoiding the melt-extrusion, mechanical fine grinding and classification process involved in pulverized toner manufacturing.

Polyton toners offer a number of potential benefits for OEM's, cartridge re-manufacturers and end-users as a result of the properties that can be achieved by our flexible Chemically Produced Toner technology.

## Polymerized Toner Manufacturing Process :



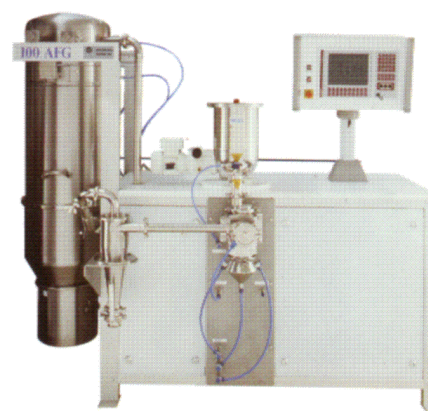
## Process Equipment :



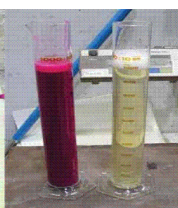
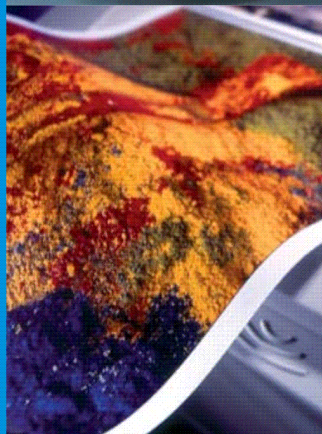
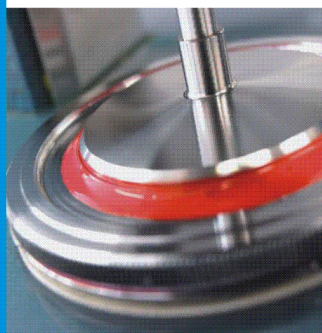
Vrieco Nauta<sup>®</sup>  
Vacuum Dryer



Cyclomix  
High Intensity Mixer



R & D (Particle Size Analyzer)  
Pilot Plant

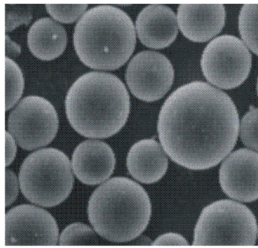




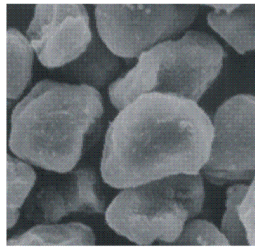
## Properties and Technical Features:

- \* control over mean particle size from 5 - >10 microns
- \* narrow particle size distributions
- \* control over particle shape (from irregular to spherical)
- \* cyan, magenta, yellow and black toners available
- \* Highest sharpness
- \* melt rheology that can be targeted to customer requirements
- \* excellent transparency for colour toners
- \* ability to achieve oil-less fusion via wax inclusion
- \* ability to vary gloss of images
- \* excellent particle to particle homogeneity
- \* Eco-friendly toner (No CO<sub>2</sub>, SO<sub>2</sub>, NO<sub>2</sub>, CFC emission)

## Particle Shape :

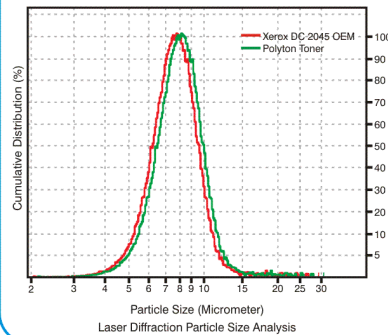


**POLYTON TONER**



**PULVERIZED TONER**

## Analysis Data :



Xerox DocuColor 2045 Toner	Image Density	Usage Gram / Page
<b>Cyan</b>	<b>2.46</b>	<b>0.065</b>
<b>Magenta</b>	<b>0.83</b>	<b>0.058</b>
<b>Yellow</b>	<b>0.77</b>	<b>0.059</b>
<b>Black</b>	<b>2.48</b>	<b>0.036</b>

## Reduced Printing Costs :

1. Maximum number of prints per kg of toner (i.e. minimum waste)
2. Simplicity of machine design (e.g. oil-less fusion, cleaner-less system)
3. Lower energy costs (e.g. low melting point)
4. Superior Free Flow, Superior Tribo Charge
5. Increase life of OPC/A-Si, Fuser roller, Blade

## Improved Print Quality

1. High image resolution
2. High transparency
3. Uniform area coverage
4. Consistent and reproducible colour
5. Stability across a print run
6. Wide color gamut potential
7. Ability to print on different substrates

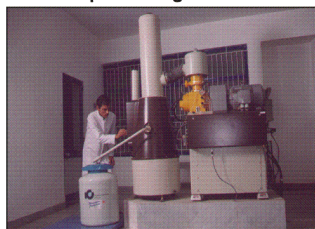
## R & D Equipment :

**Laser Particle Size Analyzer**



<b>Make</b>	SYMPATEC, Germany
<b>Model</b>	Helos-BF

**Liquid Nitrogen Plant**



<b>Make</b>	STIRLING, Holland
<b>Model</b>	PLN 108S

**Transmission Electron Microscope**



<b>Make</b>	Philips, Holland
<b>Model</b>	Tecnai 20

**Thermal Analysis System**



<b>Make</b>	Perkin Elmer
<b>Model</b>	Pyris-1 DSC, Pyris-1 TGA, DTA-7

## Supporting Instruments :

- \* High Performance Thin Layer Chromatography (HPTLC)
- \* Inductive Coupled Plasma Spectrometer
- \* UV-VIS-NIR Spectrometer With Reflectance attachment
- \* FTIR Spectrometer
- \* Micro Hardness Tester
- \* Gas Chromatography - Mass Spectrometry (GC - MS)
- \* Gel Permeation Chromatography - GPC
- \* 200 TTSP Classifying System (Hosokawa Micron)
- \* Ion Chromatography
- \* Q-Meter, M-Meter (EPPING GmbH-Germany)



# POLYTON BLACK TONER

Code No.	OEM	Copier/Printer	Compatibility List
PLT01	Canon	NP 1215(NPG-1)	NP2020/3020/3050/4050/6020/6025/6216/6220/6030/6330
PLT02	Canon	NP 270(NPG-10)	NP5060/6045/6050/6060/6085/7000/8000/8530/8580
PLT03	Canon	GP 215	GP30/55/335/405/IR400/1600/1610/2000/2200/2800/3300
PLT04	Canon	IR 5000(NPG-16)	IR6000/IR2010/IR2020/IR2230/IR2270/IR2870
PLT05	Canon	GP605	IR60/IR85/IR550/IR600/IR7200/IR8500/IR9070/IR105
PLT06	Ricoh	Aficio 1035	Aficio1045/1075/1060/2051/2060/2075
PLT07	Sharp	AR160	AR161/162/163/200S/205/2005/AL1600
PLT08	Toshiba	E-Studio 55	E-Studio 65/80/DP4580/5570/6570/8070
PLT09	Samsung	Universal	ML1220/1610/1710/1740/2010/4500/5500
PLT10	Epson	Universal	LP1700/1800/1900/5500/5800/9200/9300
PLT11	Xerox	Phaser 3117	Phaser 3130/3122/Dell 1100/Dell 1110/Lexmark 210/310
PLT12	Lexmark	T640	T642/T644/T630/T634/E230/E232/E330/E332
PLT13	HP	Universal	LJ1000/2410/4000/4200/4250/4300/4350/5000/8000
PLT14	Xerox	5090	DocuTech 6180/160/1360/180, DocuPrint 96/115/155/180
PLT15	Brother	HL 1030	HL 1230/1240/1250/1470/5040/5070/TN6300/TN6600

# POLYTON FULL COLOR TONER

Code No.	OEM	Copier/Printer	Compatibility List
PLTC01	HP	CLJ1600	CLJ1600/2600/2605/CM1015/1017/CANON LBP5000/5100
PLTC02	HP	CLJ1500	CLJ1500/2500/2550/2820/2840/4600/4650
PLTC03	HP	CLJ3600	CLJ2700/3000/3500/3800/4005/4700/CP3505
PLTC04	Canon	CLC700	CLC800/900/1000/1120/1130/1150/1160/1180
PLTC05	Canon	CLC5000	Canon CLC2400/3100/3900
PLTC06	Canon	iRC2100	iRC2105/2620/2880/3100/3200/3220/3225/3250
PLTC07	KM	Bizhub C250	Bizhub C203/252/253/350/351/352/450/500, CPP500/8050
PLTC08	Samsung	CLP 300	CLP300N/310N/315W/350N/600/CLX2160/3160/Phaser6110
PLTC09	Samsung	CLP 500	CLP500N/510/510N/550/550N
PLTC10	Xerox	DocuColor 12	FXDC1250/1255/CLW3320/Phaser780/EpsonLP8000C
PLTC11	Xerox	DocuColor 2045	DocuColor2060/5252/6060/7000/8000
PLTC12	Xerox	DocuColor iGen 3	DocuColor iGen3 90/110, DocuColor iGen4 90/110
PLTC13	Xerox	Phaser 7700	FujiXerox DocuPrintC2220/2221
PLTC14	Xerox	DocuColor 3535	DocuColor 1632, DocuColor 2240, WC Pro 32/40, C32/40
PLTC15	Xerox	Phaser 6250	Phaser6200/6250/6300/6350/Dell5100/5100CN/5110CN
PLTC16	Ricoh	IpsioCX6100D	Aficio1232C/1224C/IpsioCX6600/ImagioNeoC240/C320
PLTC17	Xerox	C525A	EpsonLP-V500/AculaserC1100/Dell3100/3110/Phaser6180
PLTC18	KM	QMS 2300	QMS2350/EpsonLP1500C/AculaserC900/1900/1500
PLTC19	Epson	AculaserLP8100C	AculaserLP8300C/8800C/7800C/Phaser790N/FXDPC620
PLTC20	KM	QMS 2400	MagiColor2430/2500/2530/2550
PLTC21	OKI	Microliner3100	Microliner3200/5100/5200/5300/5400/7000/7300/9300/9500
PLTC22	OKI	Microliner5600	Microliner5700/5800/5900/6100
PLTC23	Kodak	NexPress 2100	NexPress 2100 Plus, NexPress 2500, NexPress S3000,
PLTC24	HP	CP1215	CP1515/1518/2025/CM1312/2320/CanonLBP5050/5050N

Canon, HP, Xerox, Sharp, Toshiba, Ricoh, Samsung, Epson, Konica Minolta, OKI, Fuji, Brother, Lexmark, ImageRunner, DocuColor, Bizhub, Phaser, Ipsio, Aculaser, NexPress, DocuPrint, iGen3, iGen4, ImagioNeo, Aficio, Kodak, DocuTech, E-Studio, Hosokawa Micron, Philips, Stirling, Sympatec, Helos, Epping, TTSP, Tecnal, Pyris, Vrieco Nautia, Cyclomix, Perkin Elmer, Q-Meter, M-Meter are registered trademark of their respective owner.  
Toner performance and its suitability for the customer's purpose depend on the particular conditions of use. We recommend that customers test and evaluate products to ensure they are suitable for their requirements in all aspects.

© Polyton 2009. Printed in India. Subject to modifications without prior notice. All details in this brochure are purely informative and non-binding. Authoritative for actual orders are our quotations.

<p><b>OEM Toner Sales &amp; Support :</b></p> <p>Polyton Color Imaging Inc. Ta.: Morvi, Dist.: Rajkot, Pin Code : 363 641(Gujarat) India</p> <p>Mobile : +91-99796-74447 Tele Fax : +91-2822-283031</p> <p>E-mail : oem@polytonimaging.com Website : www.polytonimaging.com</p>	<p><b>Aftermarket Toner Sales &amp; Support :</b></p> <p>Polyton Impex Plot No. 63, Rafeleshwar GIDC Industrial Estate, 8-A National Highway, Morvi - 363 642 (Gujarat) India Mobile : +91-98258-30003 Tele Fax : +91-2822-283030 E-mail : toner@polytonimaging.com Website : www.polytonimaging.com Yahoo! : polytonimpex@yahoo.co.in MSN : polytonimpex@hotmail.com</p>	<p><b>For our other product information please contact us at :</b></p> <p>Sudarshan Industries Plot No. 19, Rafeleshwar GIDC Industrial Estate, 8-A National Highway, Morvi - 363 642 (Gujarat) India</p> <p>Mobile : +91-98256-20002 Tele Fax : +91-2822-221821</p> <p>E-mail : sudarshanindustries@mail.com</p>
---	---	---